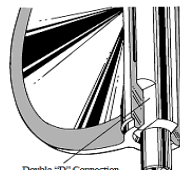
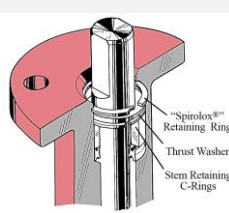
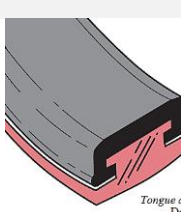


Models

- BTFxxxxWA5: 3-way, 2", Full Lugged
- BTGxxxxWA5: 3-way, 2-1/2", Full Lugged
- BTHxxxxWA5: 3-way, 3", Full Lugged
- BTJxxxxWA5: 3-way, 4", Full Lugged
- BTKxxxxWA5: 3-way, 5", Full Lugged
- BTLxxxxWA5: 3-way, 6", Full Lugged
- BTMxxxxWA5: 3-way, 8", Full Lugged
- BTNxxxxWA5: 3-way, 10", Full Lugged
- BTPxxxxWA5: 3-way, 12", Full Lugged



Features

Body	<ul style="list-style-type: none"> • One-piece lug style • Polyester coating for excellent corrosion resistance • Nylon 11 coating is available as an option 	
Size Range	2"-12" (50mm – 305mm)	
Disc-Stem Connection	<ul style="list-style-type: none"> • Double "D" connection with close tolerance for high-strength torque transmission • Eliminates exposed stem failures (e.g., leaks, corrosion, vibration) 	 <p>Double "D" Connection</p>
Disc Design	Spherically machined and hand-polished for bubble-tight shutoff, minimum torque, and extended seat life	
Stem Retaining Assembly	<ul style="list-style-type: none"> • Retained with Spirolox® ring, thrust washer, and C-rings • Retaining ring is removable with a standard hand tool • Prevents unintentional removal during service 	 <p>Spirolox® Retaining Ring Thrust Washer Stem Retaining C-Rings</p>
Stem Bushing	<ul style="list-style-type: none"> • Heavy-duty, non-corrosive acetal bushing • Absorbs actuator side thrusts 	
Stem Seal	<ul style="list-style-type: none"> • Double "U" cup seal • Self-adjusting, seals in both directions • Prevents external contaminants from entering stem bore 	
Neck Extension	<ul style="list-style-type: none"> • Extended neck allows 2" of insulation clearance • Facilitates easy mounting of actuators 	
Seat Design	<ul style="list-style-type: none"> • Tongue and groove design retains the seat without additional hardware • Resilient elastomer seat reduces torque; isolates body from flow • No flange gaskets needed; designed for slip-on or weld-neck flanges • Simplifies maintenance and replacement 	 <p>Tongue and Groove Design</p>
Primary & Secondary Seals	<ul style="list-style-type: none"> • Primary Seal: Interference fits between the molded seat flat and disc hub • Secondary Seal: Achieved by a stem diameter larger than the seat stem hole, isolating stem and body from line media 	

Note: *Stainless steel disc materials are available by special order.*



Models

Size	3-Way Models	Cv	Kv	Close Off PSI
2"	BTFxxxxWA5	52	44	200
2-1/2"	BTGxxxxWA5	104	89	200
3"	BTHxxxxWA5	134	115	200
4"	BTJxxxxWA5	210	181	200
5"	BTKxxxxWA5	330	285	150
6"	BTLxxxxWA5*	460	397	100/200
8"	BTMxxxxWA5	810	700	200
10"	BTNxxxxWA5	1180	1020	150
12"	BTPxxxxWA5	1520	1314	100

*Note: For 6" BTLxxxxWA5, the maximum close-off pressure is 100 PSI when used with T and R series actuators, and 200 PSI when used with the U series actuator.

Technical Data

Specification		All Models
Actuator Compatibility		All Neptronic R, T, and U series actuators
Sizes		2" to 12"
Valve Flow Type		3 Way: Modified Equal Percentage
Materials	Body	Cast Iron
	Disc	Nylon 11
	Seat	EPDM (Peroxide Cured)
	Stem	416 stainless Steel
End Connections		Lug ANSI 125

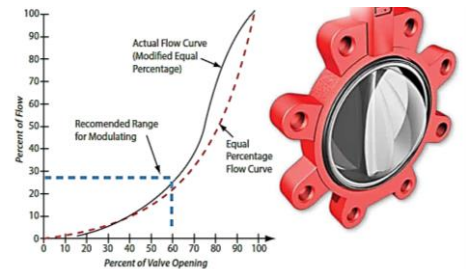


Fig. 1 Equal Percentage Flow Curve Chart

Components

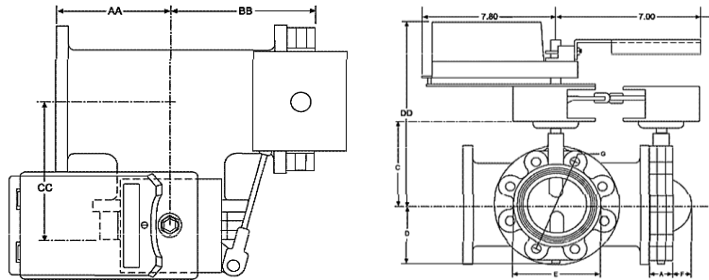
No.	Qty.	Description
1.	1	Body
2.	1	Seat
3.	1	Disc
4.	1	Stem
5.	1	Stem Seal
6.	1	Stem Bushing
7.	2	Stem Retainer
8.	1	Thrust Washer
9.	1	Retaining Ring





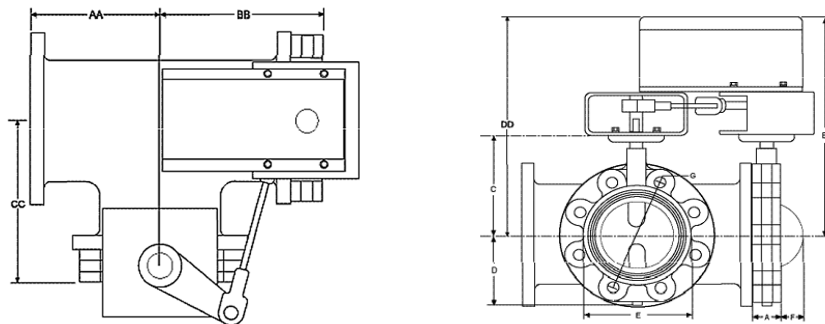
Dimensions

3-Way, 2-6" with TT / TM / RT, or RM Actuators



Valve Size	Valve Model Prefix	T Actuator Series Dimensions (inches)												
		A	B	C	D	E	F	G	H: Lugs		AA	BB	CC	DD
									No	Size				
2"	BTFxxxxWA5	1.69 in	11.39	5.51	2.72	3.69	0.24	4.74	4	5/8-11	4.50	6.19	6.19	11.39
2½"	BTGxxxxWA5	1.81 in	11.79	5.91	3.15	4.59	0.40	5.49	4	5/8-11	5.00	6.81	6.81	11.79
Valve Size	Valve Model Prefix	R Actuator Series Dimensions (inches)												
		A	B	C	D	E	F	G	H: Lugs		AA	BB	CC	DD
									No	Size				
3"	BTHxxxxWA5	1.81	11.98	6.10	3.50	5.03	0.75	6.00	4	5/8-11	5.50	7.31	7.31	11.98
4"	BTJxxxxWA5	2.05	12.45	6.57	4.53	5.85	0.95	7.50	8	5/8-11	6.50	8.55	8.55	12.45
5"	BTKxxxxWA5	2.20	13.24	7.36	5.24	7.07	1.46	8.50	8	3/4-10	7.50	9.70	9.70	13.24
6"	BTLxxxxWA5	2.20	13.83	7.95	5.66	8.22	1.93	9.51	8	3/4-10	8.00	10.20	10.20	13.83

3-Way, 6-12" with UT or UM Actuators



Valve Size	Valve Model Prefix	U Actuator Series Dimensions (inches)												
		A	B	C	D	E	F	G	H: Lugs		AA	BB	CC	DD
									No	Size				
6"	BTLxxxxWA5	2.20	18.70	7.95	5.66	8.22	1.93	9.51	8	3/4-10	8.00	10.20	10.20	18.70
8"	BTMxxxxWA5	2.36	19.81	9.06	6.85	10.03	2.76	11.75	8	3/4-10	9.00	11.36	11.36	19.81
10"	BTNxxxxWA5	2.68	21.77	11.02	8.78	12.31	3.60	14.25	12	7/8-9	11.00	13.68	13.68	21.77
12"	BTPxxxxWA5	3.07	22.95	12.20	10.24	14.12	4.31	17.01	12	7/8-9	12.00	15.07	15.07	22.95

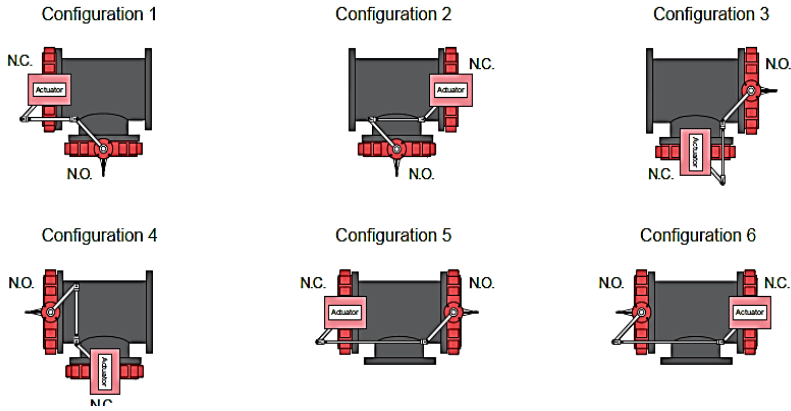
Note: These dimensions depend on the supplier and can be changed without any warning.



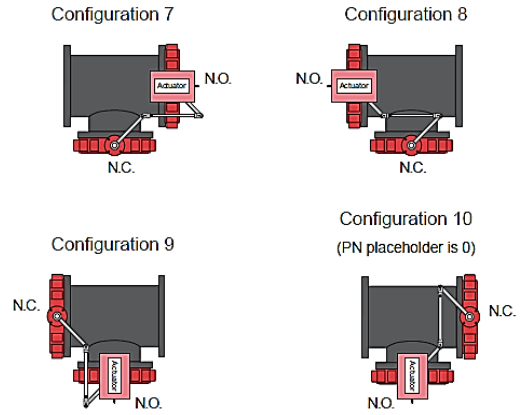
3-Way Configurations

Automated Butterfly Valve Patterns (View is from top)

Spring Return and Non-Spring Return



Spring Return ONLY



Recycling at end of life: please return this product to your Neptronic local distributor for recycling. If you need to find the nearest Neptronic authorized distributor, please consult www.neptronic.com.